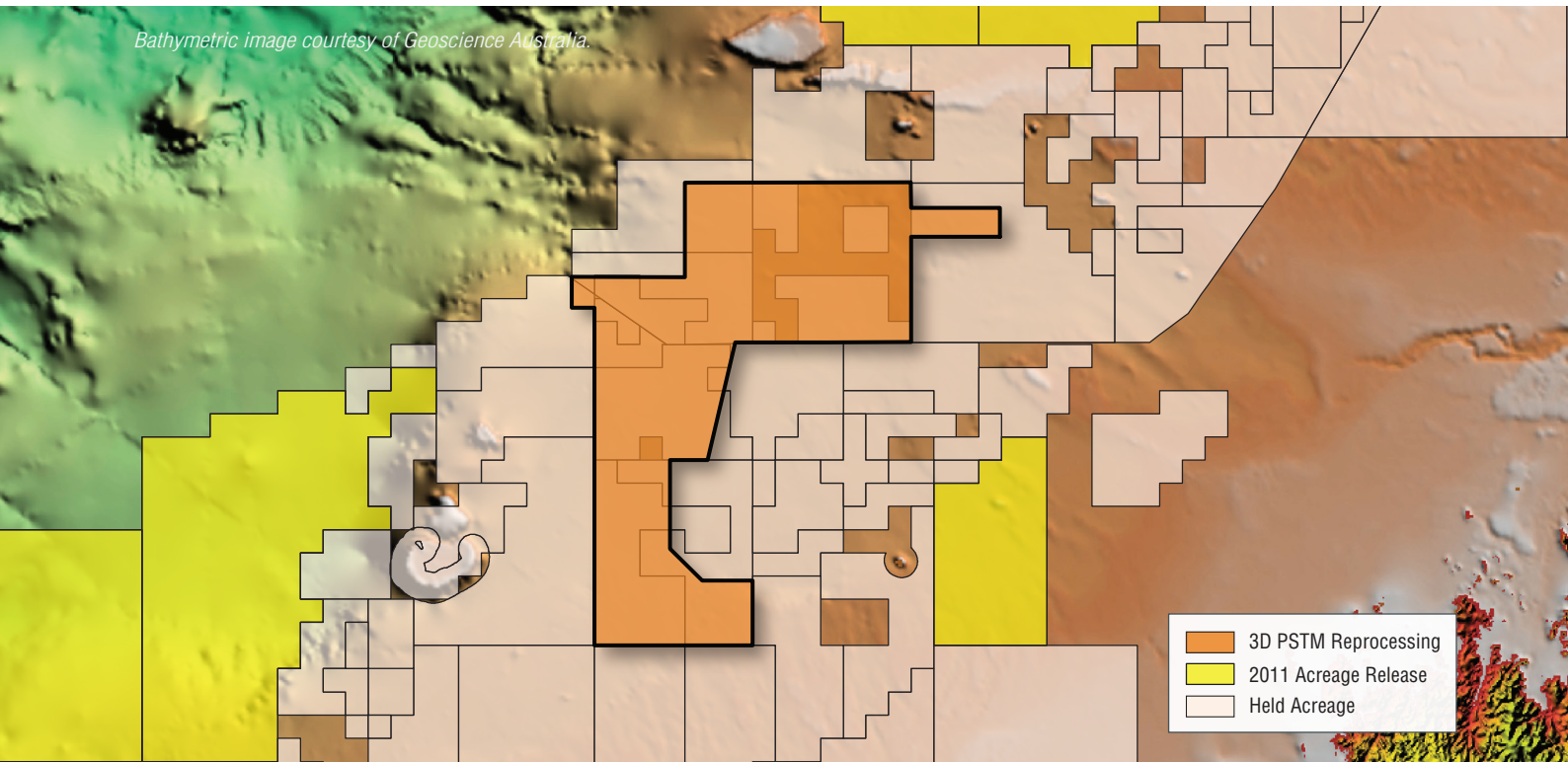


# NEW BROWSE ULTRACUBE 3D ...

Bathymetric image courtesy of Geoscience Australia.



## ...NON-EXCLUSIVE REPROCESSED SURVEYS



The Browse Ultracube is a joint project between Fugro and Searcher Seismic that involves the PSTM reprocessing and integration of 3D surveys comprising ~13,000 km<sup>2</sup> in the Browse Basin.

The data will include high quality 3D as well as gathers, angle stacks and AVO products, enabling a fresh look at play types and renewed interest in the area.



**SEARCHER**  
SEISMIC

### Fugro Multi Client Services

Justin Keating  
Mob: +61 402 898 530  
Email: j.keating@fugro.com  
[www.fugromcs.com.au](http://www.fugromcs.com.au)

